

# Hedwig's Theme

Aus „Harry Potter und der Stein der Weisen“

Musik von John Williams - Arr. T. Anjarwalla



$\text{♩} = 48$

1. Stimme

2. Stimme

3. Stimme

Violoncello

Klavier

V

A

10

1.

2.

3.

Vc.

Klav.

V

**B**

17

1.

2.

3.

Vc.

Klav.

**C**

25

1.

2.

3.

Vc.

Klav.

33 **D** 8

Fl.

B Tpt.

B Tpt.

Psn.

1.

2.

3.

Vc.

Klav.

E

8

39

Musical score for a section starting at measure 39. The score includes parts for Flute (Fl.), two B Trumpets (B Tpt.), Percussion (Psn.), Violins (1. and 2.), Viola (Vc.), and Piano (Klav.). The Flute part features a melodic line with triplets and a trill. The Percussion part has a snare drum line with accents. The Piano part provides harmonic support with chords and bass lines. The score is in a key with one flat and a 3/4 time signature.

43

Fl.

B Tpt.

B Tpt.

Psn.

1.

2.

3.

Vc.

Klav.

8

3

3

3

3

3

3

V

7

7

7

7

7

47 8 F

The image shows a page of a musical score for a symphony orchestra. The page number is 47. At the top, there is a rehearsal mark '8' in a box, followed by a measure rest '7', and then a key signature change to F major, indicated by a box with the letter 'F'. The score is arranged in systems for the following instruments: Flute (Fl.), two B Trumpets (B Tpt.), Percussion (Psn.), Violins (Viol.) with three staves numbered 1, 2, and 3, Viola (Vc.), and Keyboard (Klav.). The Flute part features a complex melodic line with several triplet markings. The B Trumpets and Percussion parts have more rhythmic and melodic patterns. The Violins and Viola parts provide harmonic support with various rhythmic figures. The Keyboard part consists of chords and arpeggiated patterns in both hands. The score is written in a common time signature (C) and includes various musical notations such as notes, rests, and dynamic markings.

This musical score page, numbered 52, features six staves. The Flute (Fl.) staff at the top contains a complex melodic line with multiple triplet markings. Below it are two staves for B Trumpets (B Tpt.), followed by a Percussion (Psn.) staff with a bass clef. The Violin section consists of three staves (1., 2., and 3.) with treble clefs. The Viola (Vc.) staff has a bass clef. The Keyboard (Klav.) section is represented by two staves, with the right hand in treble clef and the left hand in bass clef. The score is written in a key signature of one flat and a common time signature.

56

Fl.

B Tpt.

B Tpt.

Psn.

1.

2.

3.

Vc.

Klav.

3

3

*tr*

G

8

3

3



61 8

Fl.

B Tpt.

B Tpt.

Psn.

1.

2.

3.

Vc.

Klav.

# Wirbelflöte

# Hedwig's Theme

Aus „Harry Potter und der Stein der Weisen“

Musik von John Williams - Arr. T. Anjarwalla



$\text{♩} = 48$

**A** **B** **C** **D** **E** **F** **G**

37

43

48

53

58

63

Belchbläser

# Hedwig's Theme

Aus „Harry Potter und der Stein der Weisen“

Musik von John Williams - Arr. T. Anjarwalla



*♩* = 48

**A** **B** **C** **D**

Trompete in B

Trompete in B

Posaune

**E**

37

B Tpt.

B Tpt.

Psn.

**F**

46

B Tpt.

B Tpt.

Psn.

**G**

57

B Tpt.

B Tpt.

Psn.

Stimme 1-3

# Hedwig's Theme

Aus „Harry Potter und der Stein der Weisen“

Musik von John Williams - Arr. T. Anjarwalla



$\text{♩} = 48$   
V

1. Stimme

2. Stimme

3. Stimme

9 **A**

1.

2.

3.

17 **B**

1.

2.

3.

25 **C**

1.

2.

3.

**D**

35

1.  $\text{V}$   $\text{V}$   $\text{V}$   $\text{V}$   $\text{E}$   $\text{V}$

44

1.  $\text{b}$   $\text{b}$   $\text{b}$   $\text{b}$   $\text{b}$   $\text{b}$   $\text{b}$   $\text{b}$   $\text{F}$

52

1.  $\#$   $\#$   $\#$   $\#$   $\#$   $\#$   $\#$   $\#$   $\text{G}$

60

1.  $\text{b}$   $\text{b}$   $\text{b}$   $\text{b}$   $\text{b}$   $\text{b}$   $\text{b}$   $\text{V}$

Klavier

# Hedwig's Theme

Aus „Harry Potter und der Stein der Weisen“

Musik von John Williams - Arr. T. Anjarwalla



$\text{♩} = 48$

9 **A**

17 **B**

25 **C**

33

**D**

Musical notation for system 1, measures 33-40. The system is marked with a **D** chord. The music is in a key with one flat (B-flat major or D minor) and a 3/4 time signature. The right hand features a complex rhythmic pattern with eighth and sixteenth notes, while the left hand plays a steady bass line of quarter notes.

41

**E**

Musical notation for system 2, measures 41-47. The system is marked with an **E** chord. The right hand continues with intricate rhythmic patterns, and the left hand maintains a consistent bass line.

48

**F**

Musical notation for system 3, measures 48-52. The system is marked with an **F** chord. The right hand features a more active melodic line with eighth notes, while the left hand continues with a steady bass line.

53

**G**

Musical notation for system 4, measures 53-58. The system is marked with a **G** chord. The right hand has a complex rhythmic texture with many beamed notes, and the left hand plays a steady bass line.

59

Musical notation for system 5, measures 59-66. This system concludes the piece. The right hand features a final melodic flourish, and the left hand ends with a steady bass line.

Violoncello 2

# Hedwig's Theme

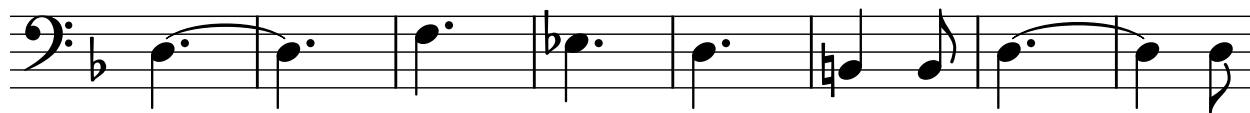
Aus „Harry Potter und der Stein der Weisen“

Musik von John Williams - Arr. T. Anjarwalla

♩ = 48  
V



9 **A**



17 **B**



25 **C**



34 **D**



42 **E**



50 **F**



58 **G**

